

**Final Report**  
**Calibration-Round-Robin**  
**CaRo 05**

**Adolf Kühner AG**  
**Dinkelbergstr. 1**  
**CH-4127 Birsfelden**  
**Switzerland**

**Tel. +41 (0)61 319 93 93**  
**Fax. +41 (0)61 319 93 94**  
**E-mail office @ kuhner.com**  
**Internet www.kuhner.com**

This report shall not be published or reproduced other than in full.

## Conclusion

---

According to international standards (e.g. ISO 9000, GLP), test equipment must be calibrated at intervals by comparison with a standard or a calibrated testing apparatus.

This calibration also applies to the 20-l-apparatus and the 1-m<sup>3</sup>-vessel for the determination of P<sub>max</sub> and K<sub>max</sub> and the apparatus for determination of the minimum ignition energy. The test procedure is an important part of this calibration. A general check at the component level is incomplete and hence inadmissible.

Unfortunately there are neither internationally recognized reference samples nor reference equipment available for the determination of these explosion characteristics. Therefore the following calibration method has been carried out successfully:

A dust has been selected, prepared and supplied to **55** test laboratories all over the world. The mean values of the explosion indices, measured by the participating laboratories, has been calculated as reference values. The testing laboratories have been informed about the evaluation with a certificate.

This report presents the results of this calibration method and describes the evaluation procedures. It also demonstrates that with this method it was possible to discover and rectify the cause of any errors with installations producing results differing widely from the reference values.

### CaRo 05 - Reference values for the Explosion Indices P<sub>max</sub> and K<sub>max</sub>

<b>P<sub>max</sub></b> (bar)	<b>8.4 ± 10%</b> (7.6 ... 9.3)
<b>K<sub>max</sub></b> (bar·m/s)	<b>250 ± 10%</b> (225 ... 275)

### CaRo 05 - Reference values for the Minimum Ignition Energy MIE

<b>E<sub>s</sub> / 3</b>	<b>E<sub>s</sub></b>	<b>E<sub>s</sub> • 3</b>
<b>0.8 mJ</b>	<b>2.5 mJ</b>	<b>7.5 mJ</b>



Birsfelden, January 2006

Adolf Kühner AG  
Christoph Cesana

## Participants

---

For details see section "list of participants".

	Pmax, Kmax (53)		MIE (45)	
	20-l	1 m <sup>3</sup>	MIKE	others
Austria	1		1	
Australia	2	1	1	
Belgium	3		2	
Canada	1		1	
Germany	10	3	9	3
England	5		2	2
Finland	1			
France	6		7	
Holland	3		2	
Hungary				1
India			1	
Italy	1		1	
Japan	1		2	
Norway	1			1
South Africa	1			
Spain	1		1	
Switzerland	6		4	
U.S.A.	6		4	
<b>total:</b>	<b>49</b>	<b>4</b>	<b>38</b>	<b>7</b>

This calibration round robin test „CaRo 05“ has been accepted world wide as the best and most reliable calibration method for this type of test equipment.

### Test substance

For correct calibration the CaRo 05 test sample has been milled, homogenized and shipped in an air tight package. Therefore the sample has to be tested „as delivered“.

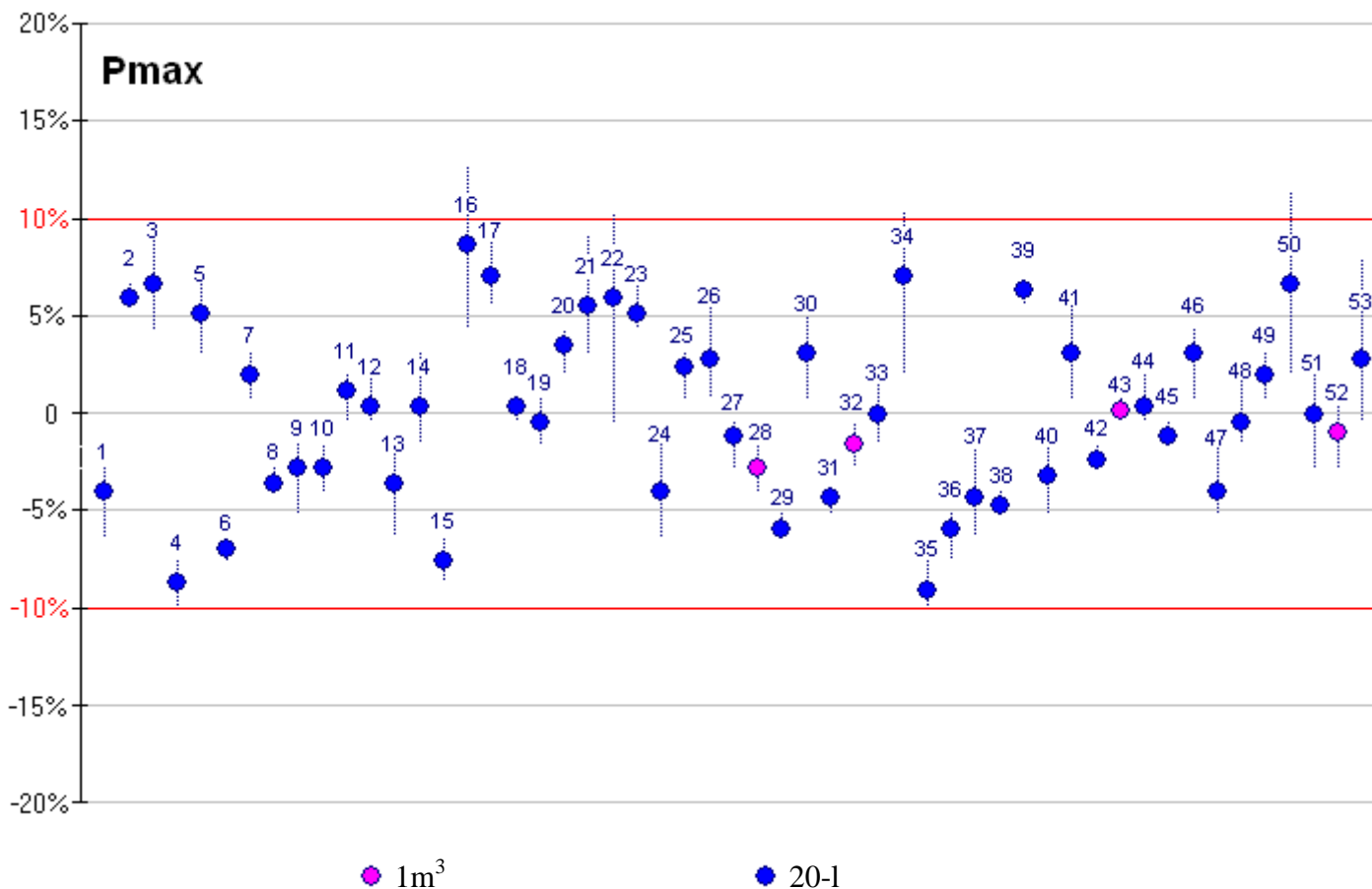
**CaRo 05 = Niacinamide USP DC (Pyridine-3-carboxamide)**

#### Particle size:

	d 10	d 50 = median	d 90
Sample 1	12 µm	<b>27 µm</b>	124 µm
Sample 2	12 µm	<b>26 µm</b>	104 µm
Sample 3	12 µm	<b>27 µm</b>	120 µm
Sample 4	11 µm	<b>25 µm</b>	72 µm

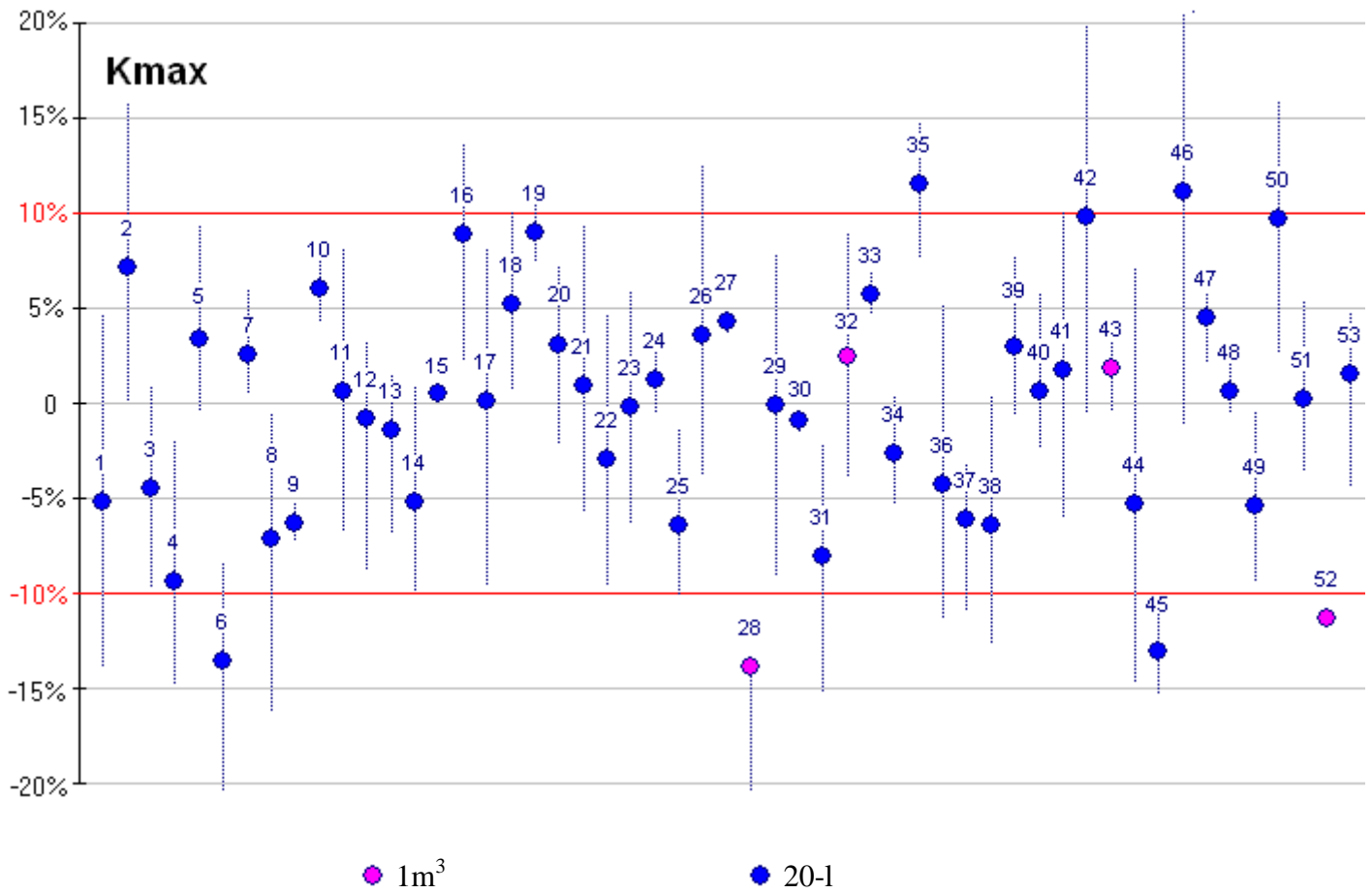
### Explosion Indices Pmax, Kmax

**Pmax = 8.4 bar ± 10% (7.6 ... 9.3) at 530 g/m<sup>3</sup>**



The individual results are drawn in relation to the arithmetic mean of all results and in chronological sequence (number of certificate).

**Kmax = 250 bar·m/s ± 10% (225 ... 275) at 590 g/m<sup>3</sup>**



The individual results are drawn in relation to the arithmetic mean of all results and in chronological sequence (number of certificate).

**Test procedure:**

The method for determination of  $P_{max}$ ,  $K_{max}$  is described in the „Manual CaRo 05“.

**Evaluation:**

The explosion indices  $P_{max}$  and  $(dP/dt)_{max}$  are defined as the mean values of the maximum values of each series. Subsequently, the explosion index  $K_{max}$  is calculated from the mean value  $(dP/dt)_{max}$ .

**Scatter of  $P_{max}$  and  $K_{max}$** 

The maxima of each series must not deviate by more than **10%** of  $P_{max}$  resp.  $K_{max}$ . Otherwise this series must be repeated !

**Calculation of the reference values:**

First the mean values of all test results (53) has been calculated. In a 2nd step all results outside of the tolerance band are excluded prior to the subsequent calculation of the mean value. Due to the large number of participants the mean values did not change.

**Cause of errors:**

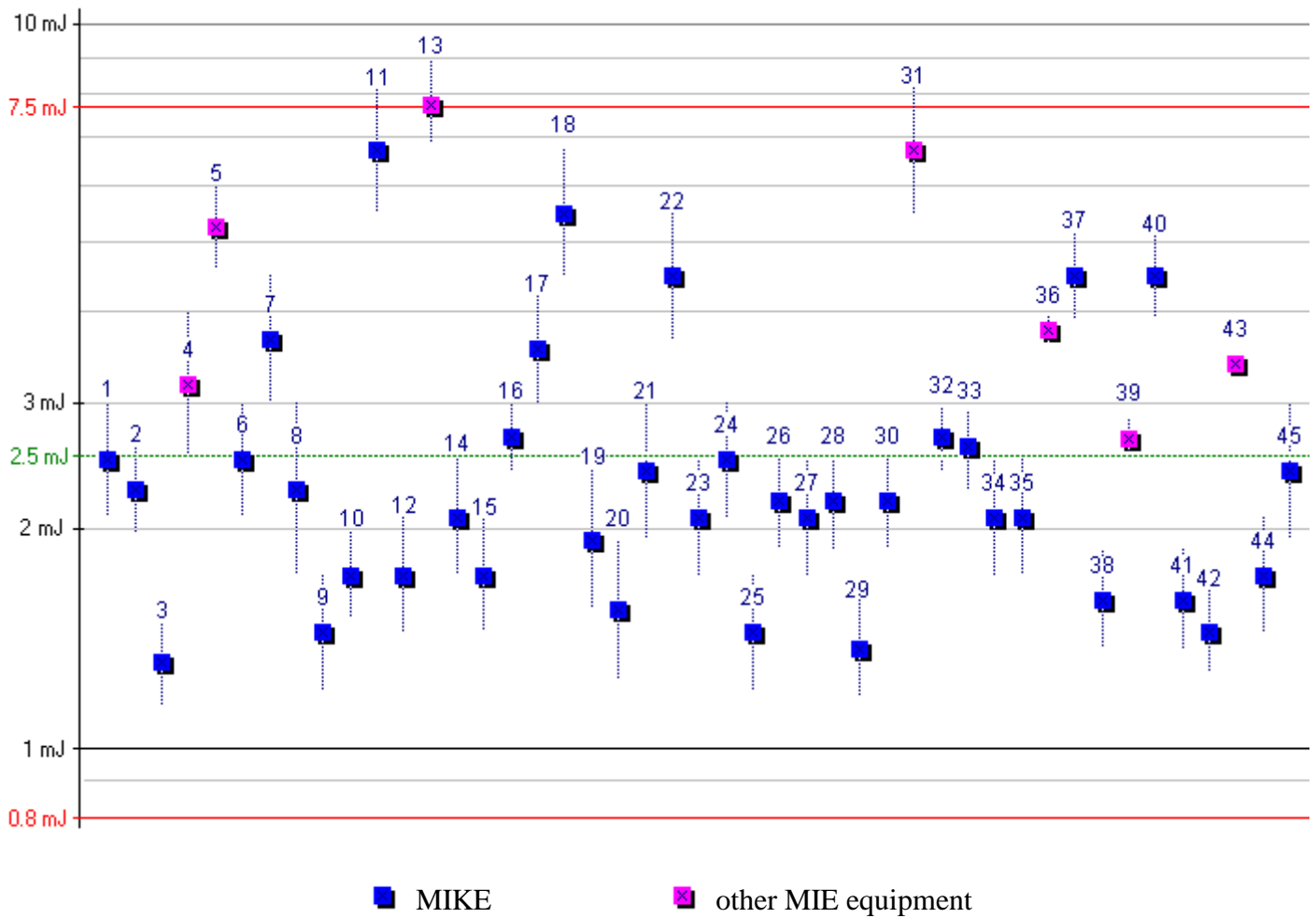
Some laboratories has to repeat the tests. The reasons are:

- a) Faulty chemical ignitors (Sobbe - white)
- b) Faulty gauge (vacuum, pressure of dust storage chamber)
- c) Leaky apparatus (o-ring, ball valve)

**Dust distribution:**

20-l-apparatus with rebound nozzle: 49 (all)  
Large vessels with ring nozzle: 3 (all)

### Minimum Ignition Energy MIE



The individual results are drawn in chronological sequence (number of certificate).

**Test procedure:**

The method for determination of the MIE is described in the „Manual CaRo 05“.

**Estimation of the statistical energy (Es):**

The minimum ignition energy MIE lies, by definition, between two energy values:

$$E1 < MIE < E2$$

For the purpose of comparison between different apparatus, only one MIE value (Es) instead of the energy range (E1, E2) shall be used. This single value (Es) can be estimated by use of the probability of ignition as follows (prEN 13821):

Provided that for the energy E2 a minimum of 5 dust concentrations evenly distributed are tested, the position of the MIE in the E1-E2 range can be estimated. At ignition energy E2, the number of dust concentrations with ignition, is divided by the total number of dust concentrations tested.

$$Es = 10^{(\log E2 - I[E2] \cdot (\log E2 - \log E1) / ((NI+I)[E2] + 1))}$$

where is:  
 $I[E2]$  = number of tests with ignition at the energy E2.  
 $(NI+I)[E2]$  = total number of tests at the energy E2.

**Criteria for conformity:**

Conformity between two equipment (a, b) is given, when the Es-values differ less than a factor of 3 (prEN 13821).

$$1/3 < Es(a) / Es(b) < 3$$

Accordingly:

Conformity in the CaRo 05 is given, when the Es-value of each equipment differ less than a factor of 3 to the mean (Es) of all equipment:

<b>Es / 3</b>	<b>Es</b>	<b>Es • 3</b>
<b>0.8 mJ</b>	<b>2.5 mJ</b>	<b>7.5 mJ</b>

The criteria for conformity has been fulfilled by all laboratories.



## List of Participants

---

Country	Company Laboratory	E-Mail	Pmax Kmax	MIE
Australia	SIMTARS Dept. of Natural Resources&Mines	ray.davis@nrm.qld.gov.au	✓	✓
Australia	TestSafe Fire & Explosions Australia	david.pearson@workcover.nsw.gov.au	✓	
Austria	AUVA STP	karin.schmidt@auva.at	✓	✓
Belgium	D.D. ENGINEERING BVBA	magda.lebleu@ddeng.be	✓	
Belgium	Janssen Pharmaceutica NV	cfannes@prdbe.jnj.com	✓	✓
Belgium	K.U. LEUVEN Dept. Werktuigkunde, Afdeling TME	filip.verplaetsen@mech.kuleuven.be	✓	✓
Canada	Dalhousie University, Laboratory Chemical eng.	paul.amyotte@dal.ca	✓	✓
England	BRE Building Research Laboratory Dust Testing	amendtl@bre.co.uk	✓	✓
England	Chilworth Technology Limited	mmerritt@chilworth.co.uk	✓	✓
England	Ciba Specialty Chemicals PLC Safety & Materials Testing Lab	greg.rogers@cibasc.com	✓	✓
England	SmithKline Beecham Hazard Determination Lab	Michael.I.Gilmore@gsk.com	✓	
Finland	VTT Technical Research Centre of Finland	johan.mangs@vtt.fi	✓	
France	ARKEMA, C.R.R.A Laboratory Process and Product Safety	laurence.cabanne@arkemagroup.com	✓	✓
France	INERIS	Pierre-Alexandre.LE-LORE@ineris.fr	✓	✓
France	L'ORÉAL Direction Générale Techn. Qualité Int. Matières Premières	simbert@dgt.loreal.com		✓
France	LSGC-CNRS-ENSIC	Laurent.Perrin@ensic.inpl-nancy.fr	✓	✓
France	RHODIA RECHERCHE Technologies de Lyon (CRTL)	Marielle.CERUTTI@EU.RHODIA.COM	✓	✓
France	Sanofi-Aventis Laboratoire Sécurité des Procédés	anne-catherine.hoppe@sanofi-aventis.com / andre.rovetta@sanofi-aventis.com	✓	✓
France	SNPE Centre de Recherches du Bouchet	f.tissandier@snpe.com		✓

Country	Company Laboratory	E-Mail	Pmax Kmax	MIE
Germany	BASF Aktiengesellschaft GCT/S Sicherheitstechnik	stefan.bitterlich@basf-ag.de	✓	✓
Germany	Bayer Industry Services GmbH & Co. OHG Sicherheitstechnisches Laboratorium	Uwe.Heinz.UH@Bayerindustry.de / Claus-Dieter.Walther.CW@Bayerindustry.de	✓	✓
Germany	BG Nahrungsmittel & Gaststätten Versuchsanlage Kappelrodeck	h.wolf.bgn@t-online.de / Norbert.Schreiner@BGN.de	✓	✓
Germany	BGIA Berufsgenossenschaftl. Institut für Arbeitssicherheit	hartmut.beck@hvbg.de	✓	✓
Germany	Boehringer Ingelheim Pharma GmbH S&M Prüfstelle	juergen.leininger@ing.boehringer- ingelheim.com	✓	✓
Germany	Exam BBG Prüf- +Zertifizier GmbH Fachstelle für Explosionsschutz	woersdoerfer@bg-exam.de / simanski@bg-exam.de	✓	✓
Germany	Henkel KGaA	Harald.Liebs@henkel.com	✓	✓
Germany	IBExU Institut für Sicherheitstechnik GmbH	j.lucas@ibexu.de	✓	✓
Germany	Schering AG ADP - CST	kai.lovis@schering.de	✓	✓
Germany	Wacker-Chemie GmbH	Alfred.Augsberger@wacker.com		✓
Germany	Wilhelm-Jost-Institut e.V.		✓	✓
Holland	AKZO NOBEL SAFETY SERVICES	Ramon.vanBiljouw@akzonobel.com	✓	✓
Holland	anonymous		✓	✓
Holland	DSM RESOLVE TAdPS	eddy.oost-van-t@dsm.com	✓	
Hungary	Gedeon Richter Ltd. Process Safety Lab Chemical Works	gy.negyesi@richter.hu		✓
India	CIBA India Private Limited Research & Technology	vijay.bhujle@cibasc.com		✓
Italy	Stazione Sperimentale Combustibili	mazzei@ssc.it	✓	✓
Japan	Sumitomo Chemical Co., LTD Techn.Inst.Ind.Safety	tanakan@sc.sumitomo-chem.co.jp	✓	
Japan	TIIS - Technology Institution	matsuda@ankyoo.or.jp		✓
Norway	GexCon AS Dust Explosion Test Laboratory	cta@gexcon.com	✓	✓
South Africa	CSIR Fire Engineering Sciences	KvDyk@csir.co.za	✓	
Spain	anonymous		✓	✓

Country	Company Laboratory	E-Mail	Pmax Kmax	MIE
Switzerland	F. Hoffmann-La Roche AG Basel, Sicherheitslabor, Abt. PSSU-SL	thomas.glarner@roche.com		✓
Switzerland	FIRMENICH S.A.	franco.ferregutti@firmenich.com	✓	
Switzerland	Lonza SA Visp Sicherheitslabor (WUSRL)	eberhard.irle@lonza.com	✓	
Switzerland	Schweiz. Institut zur Förderung der Sicherheit	abisel@swissi.ch	✓	✓
U.S.A.	ABBOTT Laboratory Process Safety Lab	kurt.pearl@abbott.com	✓	✓
U.S.A.	Chilworth Technology, Inc.	safety@chilworth.com	✓	
U.S.A.	Ciba Specialty Chemicals Laboratory CSTL	larry.floyd@cibasc.com	✓	✓
U.S.A.	FM GLOBAL Technologies LLC	richard.jambor@fmglobal.com	✓	
U.S.A.	International Specialty Products Process Technology Operations	jforman@ispcorp.com		✓
U.S.A.	Merck & Co., Inc.	michael_toth@merck.com	✓	✓